

## TIER II MANAGER™

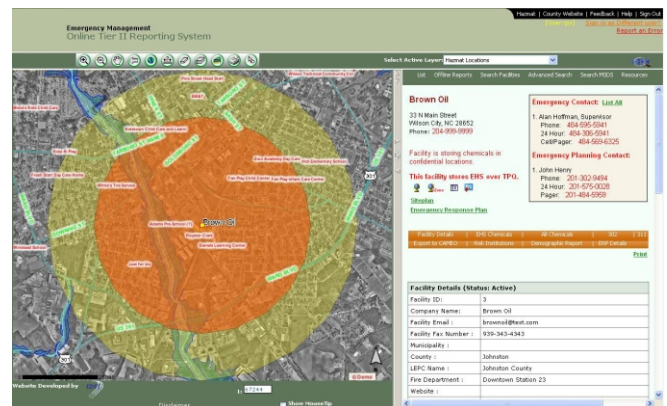
Serving Thousands of Users

## GIS Mapping Module

**The GIS Mapping Module provides planners and responders quick access to viewer hazardous material locations, risk institutions and vulnerability zones for a more successful response.**

The GIS Mapping Module allows users to decipher the proximity of critical infrastructure, such as utilities, and environmental features, like flood zones, to the chemical storage facility. Emergency Response will differ depending on this analysis. This spatial component is available to map chemical storage facilities and graph vulnerability zones, risk institutions, and other critical environmental or man-made infrastructure.

The highly functional viewer is flexible to handle integration with various other modules and provides handlers for zooming, panning, selecting, and identifying.



The GIS application development is completed using ESRI Internet Map Server known as ArcIMS. Specific data layers defined by the Agency can be integrated into the Viewer to provide an interactive analytical mapping tool. Additional functionality providing automation, calculation, or map reporting can be defined depending on client's requirements.

### FEATURES

- Responders and Planners can map all chemical storage facilities.
- Demographic reports can be generated in seconds based on the risk area.
- Users can run reports on institutions at risk such as hospitals, nursing homes, day care centers, businesses, etc.
- Map all loaded "layers" such as roads, rivers, buildings, fire hydrants, etc.