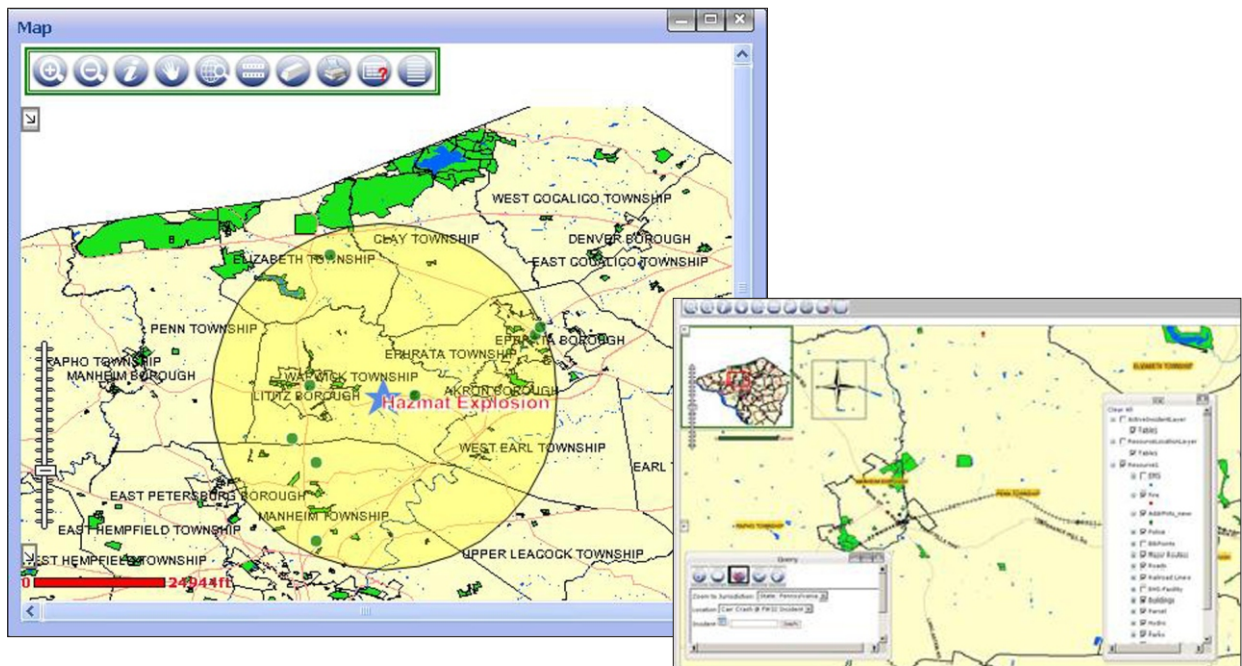


Incident Collaborator™

Creating Visibility During a Crisis

Mapping Module

The Mapping module of the Incident Collaborator™ provides users with a geographic common operating picture of all incidents.



FEATURES

- Powerful mapping features to easily map locations.
- Zoom in, out, and pan the map.
- Conduct proximity analysis.
- Map locations for incident or resources.
- Map Incidents, Incident Facilities, and Support Facilities.
- Select areas graphically and get results of underlying features.
- Different NIMS standard icons are used to help users differentiate between various types of incidents on the map.
- Built on the latest GIS software from ESRI or Open Source technology.