



IDSi International
www.idsiinternational.com
info@idsiinternational.com

Feature Listing



TIER II MANAGER™

A hazardous material inventory management
and emergency planning solution

An Enterprise Solution

IDSi International

2125 Center Avenue, Fort Lee, NJ 07024, USA
Tel: 201 - 302 - 9494, Fax: 201 - 302 - 9495
Email: info@idsiinternational.com

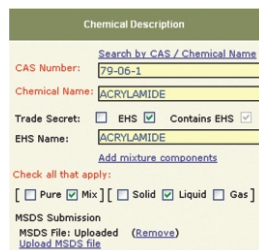
LEARN MORE – VIEW DEMO – REQUEST PRICING AT www.idsiinternational.com

The **TIER II MANAGER™** provides a hazardous material inventory management and emergency response planning system.

Key Technology Features

- Web-based system
- Mapping components for spatial analysis
- SQL Server database compliant
- Can be integrated with third party systems
- Security protocols implemented at various levels of the system
- Scalable for high performance
- System available in various languages

The **Submit Module** provides chemical inventory managers with the ability to add, edit, and view chemical inventory stored at various sites.



Chemical Description

Search by CAS / Chemical Name

CAS Number:

Chemical Name:

Trade Secret: EHS Contains EHS

EHS Name:

[Add mixture components](#)

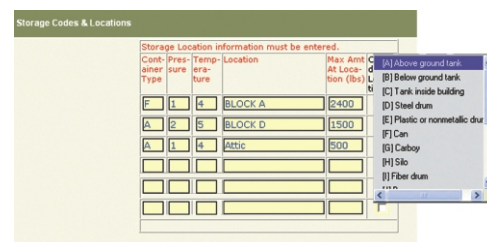
Check all that apply:

Pure Mix Solid Liquid Gas

MSDS Submission

MSDS File: [Remove](#)

[Upload MSDS file](#)



Storage Codes & Locations

Storage Location information must be entered.

Cont. Type	Pressure	Temperature	Location	Max Amt At Location (lbs)	Code
F	1	4	BLOCK A	2400	
A	2	5	BLOCK D	1500	
A	1	4	Attic	500	

Code Legend:

- (A) Above ground tank
- (B) Below ground tank
- (C) Tank inside building
- (D) Steel drum
- (E) Plastic or nonmetallic drum
- (F) Can
- (G) Carboy
- (H) Silo
- (I) Fiber drum
- (*)

Key Technology Features

- Easy-to-use interface
- Facilities can submit chemical inventory online using a simple web-based browser
- Online registration for new user accounts
- Integrated online process for new user account approval
- Secure user accounts provide protected access to facility information
- Ability for users to reset or retrieve their own forgotten password
- Can be used by many users at various locations at the same time
- Guided, step-by-step process for facility submission of chemical inventory
- Robust Extremely Hazardous Substance (EHS) validation
- Robust EHS above Threshold Planning Quantity (TPQ) validation
- Ability to handle special policies like confidential locations and mixture components
- Chemical look-up menus and drop down to reduce errors
- Ability to link Site Plans
- Existing Hazardous Material Inventory System can be integrated or imported
- Facilities can view Billing Summary online
- Facilities can complete an Online Fee Exemption Questionnaire
- Reports can be printed as PDF reports, which are easy to print or email
- Various events trigger email notifications as records or alerts for facility users and administrators
- Retrieve context specific help instructions

The Planning/Response Module provides risk professionals and site first responders with updated information about chemical inventory, chemical risk profiles, and hazards analysis completed by site planners for each storage site.

Material Safety Data Sheet
 Acrylamide

ACC# 90858

Section 1 - Chemical Product and Company Identification

MSDS Name: Acrylamide
Catalog Numbers: BP170 100, BP170 5, BP170 500, BP170-100, BP170-5, BP170-500, BP170100, BP1705, BP170500, BP200, BP200-A, BP201, NC9517857, O1065 500, O1065-500, O1065500, O1066 100, O1066-100, O1066100
Synonyms: Acrylic amide; Ethylenecarboxamide; 2-Propenamamide.
Company Identification:
 Fisher Scientific
 1 Reagent Lane
 Fair Lawn, NJ 07410
For information, call: 201-796-7100
Emergency Number: 201-796-7100
For CHEMTREC assistance, call: 800-424-9300

Emergency Contact: [List All](#)

1. Alan Hoffman, Supervisor
 Phone: 484-595-5941
 24 Hour: 484-306-5941
 Cell/Pager: 484-569-6325

Emergency Planning Contact:

1. John Henry
 Phone: 201-302-9494
 24 Hour: 201-575-0028
 Pager: 201-484-5959

EHS Chemicals
 Listing reflects chemicals entered by the facility.

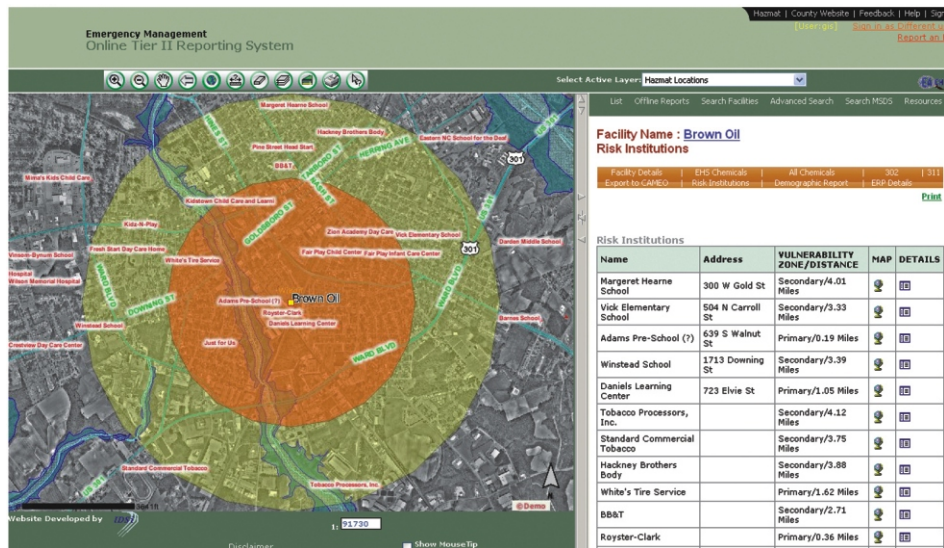
CAS	Chemical Name	EHS	Exceeds TPQ	Contains EHS	EHS TPQ	Qty Stored	MSDS	Profile	First Aid Guide
79-06-1	ACRYLAMIDE	<input checked="" type="checkbox"/>	Yes	<input checked="" type="checkbox"/>	1,000/10,000	2400 [03]	MSDS		
7782-50-5	CHLORINE	<input checked="" type="checkbox"/>	Yes	<input type="checkbox"/>	100	3000 [03]	MSDS		

2 EHS Chemicals Listed

Planning/Response Module Features

- Rapidly access views to real time chemical inventory data in single view that can be easily searched and sorted
- Various searches by facility location and chemical information
- User friendly reports for First Responders
- Wireless access and standalone application
- Uploads information to a stand alone system
- View Facility Diagrams or Site Plans
- View the Facility Emergency Response Plan approved by site planner
- Retrieve First Aid Guides for Extremely Hazardous Substance (EHS) Chemicals
- Retrieve Chemical Profiles for Extremely Hazardous Substance (EHS) Chemicals
- Integration for rapid access to updated Material Safety Data Sheets (MSDS)
- Search a database of over two million Material Safety Data Sheets (MSDS)
- Access various resources like the Chris Manual and Emergency Response Guide Book. Configurable to support any resources
- Search for chemicals by Chemical Guidebooks by UN Numbers
- Conduct and run vulnerability assessment based on Extremely Hazardous Substance (EHS) submission
- Review site history
- Retrieve detailed reports to monitor all users, activities, and events in the system
- Multiple levels of security ensure appropriate access to data and functionality depending on the user's role
- Import from Tier 2 Submit
- Export to CAMEO
- Multiple search capabilities
- Retrieve CAMEO data sheets

The Mapping Module supports the Planner's ability to gather information from numerous site, edit and review the plan, approve the plan, and publish it to a Planning/Response module to be used by emergency responders.



Mapping Module Features

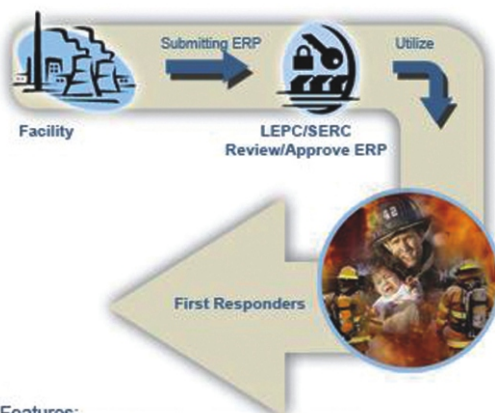
- Powerful visual mapping
- Map all chemical storage facilities
- Run report on populations at risk
- Run report on institutions at risk such as hospitals, nursing homes, day care centers, businesses, etc.
- Map all loaded map "layers" such roads, rivers, buildings, fire hydrants, etc. Turn layers on and off in order to get an understanding of different relationships between datasets
- Conduct proximity analysis. For example, show all fire hydrants within 1 meter of the incident.
- Search for properties of map layers. For example, show buildings taller than 1000 meters
- Based on ESRI software platform or Open Source platform

The Administration Module supports the compliance team's ability to manage inventory and the administrator ability to manage users and system, security, and resource settings.

Administration Module Features

- Archive all records for audit and history
- Review complete facility inventory and compliance management
- Manage user accounts
- Manage system and security settings
- Conduct mass Email Notifications and Mailing Label generation.
- Generate Form Letters for violations.
- Generate complex reports using the Advanced Report Writer
- Numerous other administrator features

The Emergency Response Plan Feature supports the Planner's ability to gather information from numerous sites, edit and review the plan, approve the plan, and publish it to a dashboard to be used by emergency responders.



Features:

1. Streamline plan creation and maintenance.
2. Centralized access to updated plans.

Emergency Response Plan Features

- Chemical facilities can create an Emergency Response Plan online with information specific to the site.
- Data is auto populated by the inventory system.
- Planners can edit and approve the Online Emergency Response Plans.
- Responders and Planners can view the Facility Emergency Response Plan approved by site planner.



Emergency Management
TIER II MANAGER™ Admin Console

Wilson County
Emergency Management

List of Invoices

Invoice # 30

Date: 4/3/2008
Due Date: 5/3/2008

Billing Address: MAILING NAME
2905 1755 LN
WILSON CITY, NE 28027
UNITED STATES

Item: No. of Chemicals
1

Date	Transaction ID	Transaction Type	Report Year	Invoice Number	Notes	Status	Write Off	Amount (\$)	Balance (\$)	Posted Balance (\$)	
7/23/2007	11	Invoice	2005	11	Fees to be paid as part of Annual Submission of Tier II Report.	Posted		122.00	122.00	122.00	
3/10/2008	15	Invoice	2005	15	Fees to be paid as part of Revision Submission of Tier II Report.	Posted		142.00	264.00	264.00	
Grand Total									264.00	264.00	

Total Amount: \$1,288.88

Page 1 of 3 (Total Results:28)

The Billing Module offers complete accounting capabilities for invoice and payments received management.

Billing Features

- Facilities can view Billing Summary online
- Facilities can complete an Online Exemption Questionnaire
- Enables the generation of an online Invoice based on Tier II submission
- Ability to Record payments received
- Conduct Account Adjustments and Refunds
- Create Fund Allocation Groups
- Generate late fees
- Archive all records for audit and history
- Batch billing
- Detailed reports about payments received, pending payments, over or under payments, exemption status, and not billed for current year